

MALIBU II, 12" ROUGH-IN

Two-Piece Toilet, CEL

C-3250 Bowl, T-3250 Tank

Product Features

- Vitreous china two-piece toilet, with skirted trapway
- Chair-height (16-1/2"), compact-elongated bowl
- MicroGlaze™ anti-microbial, stain-resistant glaze
- 12" (305mm) rough-in
- Rimless wash – large twin jets with open rim to facilitate a powerful flush and better hygiene

EcoQUATTRO™ Flushing System

- High-performance, gravity flush
- 1.28 gallons (4.8 liters) per flush - EPA WaterSense, high-efficiency toilet (HET)
- Fully glazed, 2-1/8" internal trapway
- Oversized 3" flush valve
- Large 9" x 7" water surface area and open rimless bowl for an exceptionally clean bowl

Accessories Included

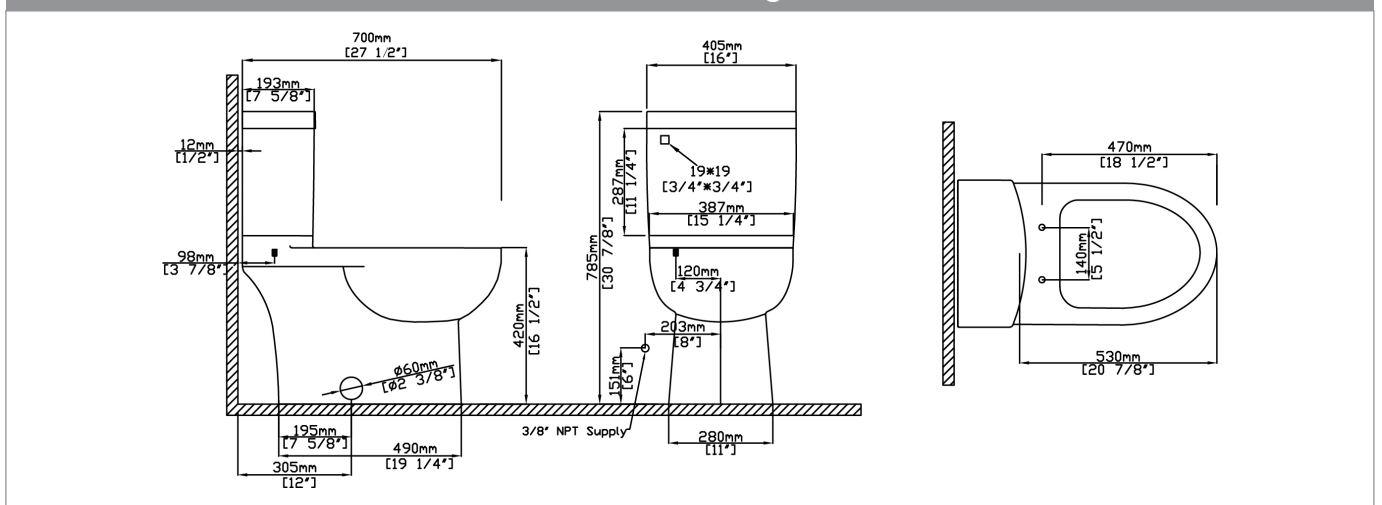
- Silent Close, quick-release seat and cover
- Solid metal trip lever, Polished Chrome finish
- Bolt alcove cover tiles (set of 2)

Quality Assurance

- Factory flush-tested
- Limited lifetime product warranty



Dimensional Diagram



IMPORTANT: Dimensions are nominal and may vary within the range of tolerance per NSI Standard A112.19.2. These measurements are subject to change. No responsibility is assumed for use of superseded or voided pages.

PRODUCT OPTIONS & PARTS

Glaze Options



White .01

Seat Options



S-235 (Standard)

- SB-242.500 Bolts**
- SC-242 Caps**
- .500 Polished Chrome
- .502 Polished Nickel
- .503 Satin Nickel
- .504 Polished Brass
- .01 White (Plastic)



S-232 (Duroplast)

- SB-242.500 Bolts**
- SC-242 Caps**
- .500 Polished Chrome
- .502 Polished Nickel
- .503 Satin Nickel
- .504 Polished Brass
- .01 White (Plastic)



Seat Bolt Caps
See toilet seat operation manual for matching bolt caps' model number and

Trim Options



F-62 (Standard)

- .500 Polished Chrome
- .502 Polished Nickel
- .503 Satin Nickel
- .504 Polished Brass
- .508 Venetian Bronze
- .514 Satin Brass
- .01 White Enamel
- .05 Matte Black



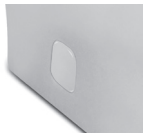
F-63

- .500 Polished Chrome
- .502 Polished Nickel
- .503 Satin Nickel
- .504 Polished Brass
- .508 Venetian Bronze
- .01 White Enamel



F-65

- .500 Polished Chrome
- .502 Polished Nickel
- .503 Satin Nickel
- .504 Polished Brass
- .508 Venetian Bronze
- .01 White Enamel
- .05 Matte Black



MC-300 (Standard)

- .01 White



Polished Chrome
.500



Polished Nickel
.502



Satin Nickel
.503



Polished Brass
.504



Venetian Bronze
.508



Satin Brass
.514



White Enamel
.01



Matte Black
.05

Replacement Parts

Fill Valve	Flush Valve	Flapper	Tank-to-Bowl Kit	Floor Bolts
VL-5801	VH-5802.15	9400.580.01	9400.513.01	Not Included

Codes & Compliance

- ASME A112.19.2M
- CSA B45.1



Meets the Americans With Disabilities Act (ADA) requirements for accessible building

Act (ADA) guidelines and ANSI A17.1 safety codes.