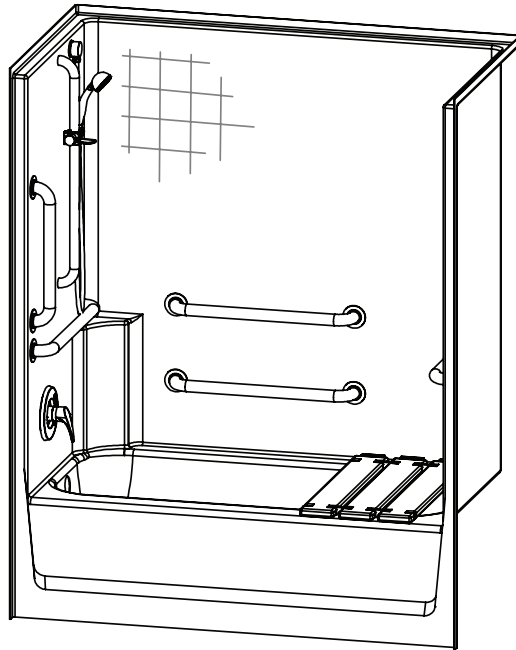


2603CTH – ACCESSIBLE TUB-SHOWERS

inches

Interior: 56 x 30 ¼ x 73

Exterior: 60 x 33 ¼ x 74 ¼



AQUATIC ADVANTAGE

- National distribution
- 7 manufacturing facilities
- Private fleet
- Centralized customer service
- Field support

COLOR & TRIM OPTIONS

Stock	Upgraded
White	Almond Biscuit Bone

**Additional custom colors available.
(Contact Customer Service)

FEATURES

- AcrylX™ applied acrylic surface
- 16" skirt
- Molded toiletry shelf
- Smooth tile
- LH or RH drain
- Lifetime limited warranty (30 year commercial)

OPTIONS

- Grab bars
- Removable seat
- Hand-held shower assembly with slide bar
- Pressure balancing mixing valve
- Curtain rod and/or shower curtain

CODE COMPLIANCE

- ADA
- FHA
- ICC/ANSI A117.1
- IAPMO Z124-2017
- HUD UM73a
- CAN/CSA-B651-04
- CSA-B45-11

**Code compliant when fully equipped and installed according to guidelines.



Aquatic products may be specified as Lasco Bathware.



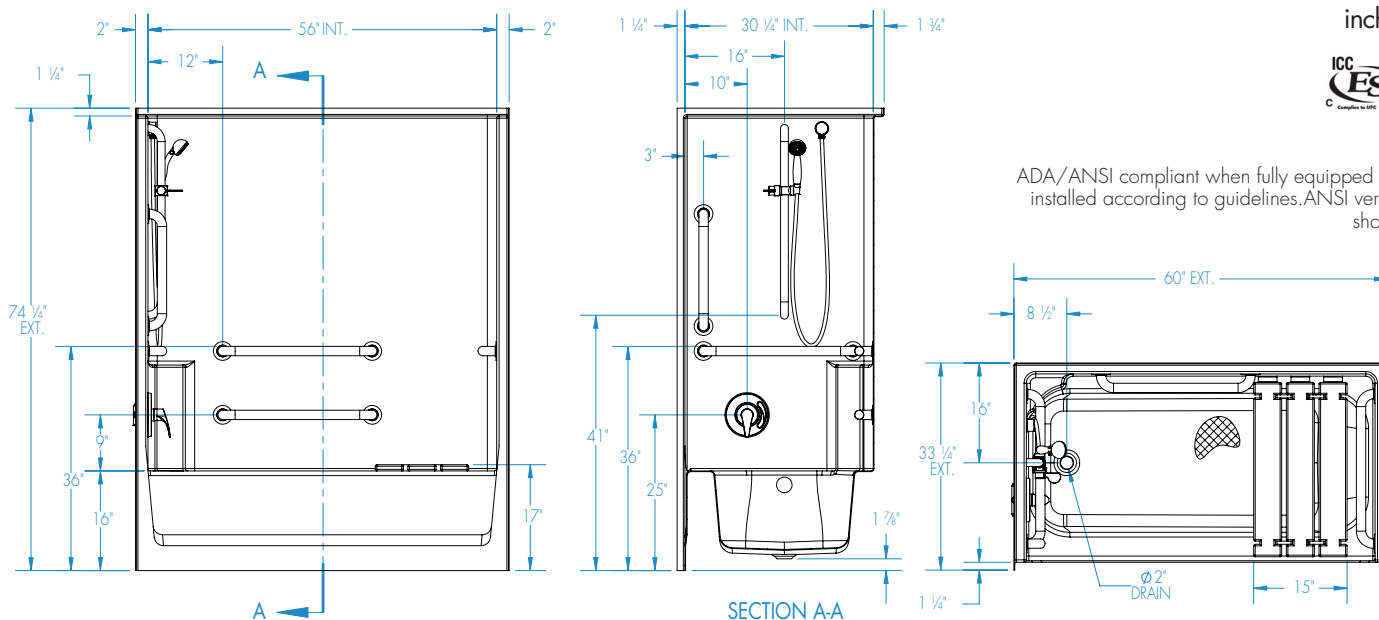
Aquatic products may be specified as Lasco Bathware.

2603CTH

Interior: 56 x 30 1/4 x 73
Exterior: 60 x 33 1/4 x 74 1/4
inches



ADA/ANSI compliant when fully equipped and installed according to guidelines. ANSI version shown.



FEATURES

Dimensional Tolerance $\pm 3/8$ ". Dimensions needed for site preparation should be measured from the unit. Aquatic assumes no responsibility for preparatory work.

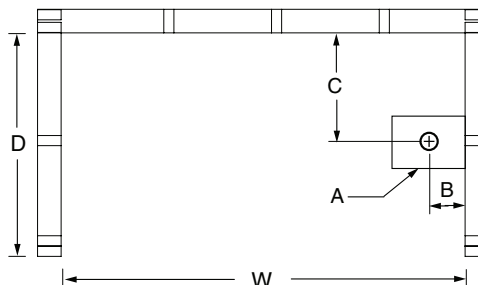
Type and Model #	Material	Wall Finish	Pieces	Drain	Skirt Height	Net Wt. lbs	Pkg. Wt. lbs
Tub-shower #2603CTH	AcrylX™	Smooth tile	1	LH/RH	16" skirt	126	136

DIMENSIONS

Specifications	inches
Width: Overall / Net	60 / 56
Depth: Overall / Net	33 1/4 / 30 1/4
Height: Overall / Net	74 1/4 / 73
Enclosure Opening:	56
Skirt Height:	16
Drain Rough-In (from Back Wall)	8 1/2
Drain Rough-In (from Side Wall)	16
Drain: Diameter / Clearance	2 / 1 7/8

FRAMING DIMENSIONS inches

Type	D Depth	W Width	H Height	A	B	C
Alcove	33 1/4	60 1/8	-	Box Out	1 (25)	16



SUMP DATA

Top of Drain to Bottom of Overflow	Capacity to Overflow gal (ltr)	WIDTH @ centerline		DEPTH @ centerline	
		Top	Bottom	Top	Bottom
12	37	22 1/4	20	53 1/4	44